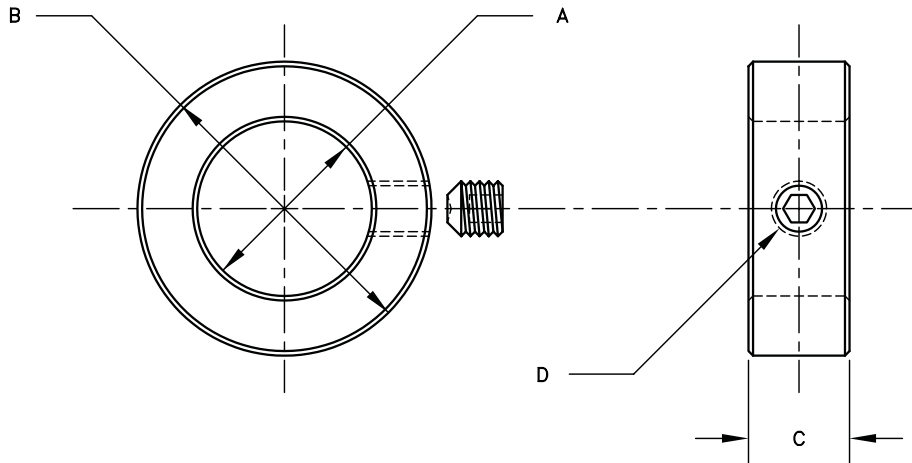


SET COLLAR



CARBON STEEL WITH ZINC FINISH FURNISHED COMPLETE WITH SET SCREW

| ITEM | A* | B | C | D |
|----------|--------|-------|-------|---------|
| 3/8SC | 3/8 | 3/4 | 3/8 | 1/4-20 |
| 1/2SC | 1/2 | 1 | 7/16 | 1/4-20 |
| 5/8SC | 5/8 | 1 1/8 | 1/2 | 5/16-18 |
| 3/4SC | 3/4 | 1 1/4 | 9/16 | 5/16-18 |
| 7/8SC | 7/8 | 1 1/2 | 9/16 | 5/16-18 |
| 15/16SC | 15/16 | 1 5/8 | 9/16 | 5/16-18 |
| 1SC | 1 | 1 5/8 | 9/16 | 5/16-18 |
| 1-1/8SC | 1 1/8 | 1 3/4 | 5/8 | 5/16-18 |
| 1-3/16SC | 1 3/16 | 2 | 11/16 | 3/8-16 |
| 1-1/4SC | 1 1/4 | 2 | 11/16 | 3/8-16 |
| 1-3/8SC | 1 3/8 | 2 1/8 | 3/4 | 3/8-16 |
| 1-7/16SC | 1 7/16 | 2 1/4 | 3/4 | 3/8-16 |
| 1-1/2SC | 1 1/2 | 2 1/4 | 3/4 | 3/8-16 |

* DIMENSION "A" IS SLIGHTLY OVERSIZED TO ACCOMMODATE A SHAFT OF THE NOMINAL DIAMETER.

