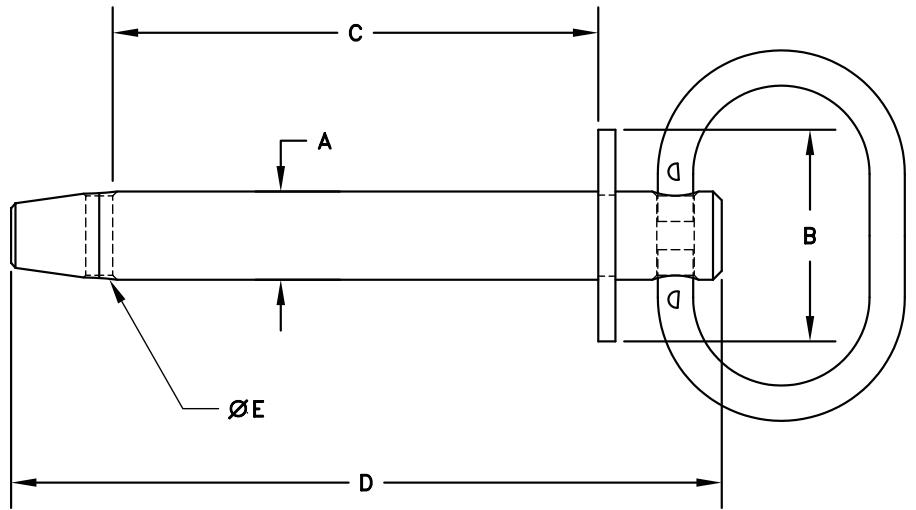


PIN-LOCK HITCH PIN



CARBON STEEL WITH ZINC FINISH

ITEM	A	B	C	D	E
38H	3/8	1	3	4 3/16	7/64
12H	1/2	1 1/4	3 1/2	5	5/32
58H	5/8	1 1/2	4 1/2	6 1/8	0.191
34H	3/4	1 1/2	4 1/2	6 1/8	0.191
78H	7/8	1 3/4	4 1/2	6 5/8	0.191
100H	1	1 3/4	4 1/2	6 5/8	0.191
586H	5/8	1 3/4	6	7 5/8	0.191
346H	3/4	1 3/4	6	7 5/8	0.191
786H	7/8	1 3/4	6	8 1/8	0.191
1006H	1	1 3/4	6	8 1/8	0.191
1187H	1 1/8	2	7	9 1/8	0.191
1250H	1 1/4	2	7	9 1/8	0.191

17-4 STAINLESS STEEL WITH ZINC FINISH

ITEM	A	B	C	D	E
58HSS	5/8	1 1/2	4 1/2	6 1/4	0.191
34HSS	3/4	1 1/2	4 1/2	6 1/4	0.191

